

Surface Preparation for Safeplate Application

Summary

Most substrates are best prepared by cleaning with given alcohol swab prior to applying Safeplate.

Exceptions to this general procedure that may require additional surface preparation include:

- **Heavy Oils:** A degreaser or solvent-based cleaner may be required to remove heavy oil or grease from a surface and should be followed by cleaning with IPA/water.
- **Abrasion:** Abrading a surface, followed by cleaning with IPA/water, can remove heavy dirt or oxidation and can increase surface area to improve adhesion.
- **Adhesion Promoters:** Priming a surface can significantly improve initial and ultimate adhesion to many materials such as plastics and paints.
- **Porous Surfaces:** Most porous and fibered materials such as wood, particleboard, concrete etc. need to be sealed to provide a unified surface.
- **Unique Materials:** Special surface preparation may be needed for glass and glass-like materials, copper and copper containing metals and plastics or rubber that contain components that migrate (e.g. plasticizers).

General Procedure

- To obtain optimum adhesion, the bonding surfaces must be well unified, clean and dry. Typical surface cleaning solvents are IPA/water mixture (rubbing alcohol) or heptane.

- Bond strength is dependent upon the amount of adhesive-to-surface contact developed. Firm application pressure develops better adhesive contact and helps improve bond strength.

Generally, this means that the tape should experience at least 15 psi (100 kPa) in roll down or platen pressure.

- After application, the bond strength will increase as the adhesive flows onto the surface. At room temperature, approximately 50% of the ultimate strength will be achieved after 20 minutes, 90% after 24 hours and 100% after 72 hours. In some cases, bond strength can be increased and ultimate bond strength can be achieved more quickly by exposure of the bond to elevated temperatures (e.g. 150°F [66°C] for 1 hour).

***Note:** These cleaner solutions contain **greater than** 250 g/l of volatile organic compounds (VOC). Please consult your local Air Quality Regulations to be sure the cleaner is compliant. When using solvents, be sure to follow the manufacturer's precautions and directions for use when handling such materials.

Fitting Steps for Four Wheelers

SAFEPLATE

ACCESSORIES THAT PROTECT YOUR NUMBER PLATES

SAFEPLATE LIMITED

How to select Safeplate for your car

Check your rear plate of vehicle and look for rivet cap is off/on



Plate with rivet cap off

More info about SAFEPLATE visit us at www.safeplate.co.uk



Plate with rivet cap on

Plate with rivet cap on

SAFEPLATE



FITTING STEPS

After selecting your SAFEPLATE

SAFEPLATE

7

Easy steps

Of installation...

SAFEPLATE

Select your Safeplate

1



SAFEPLATE

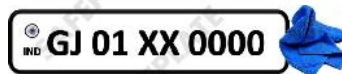
2 Turn around Safeplate



SAFEPLATE

3

Clean your number plate thoroughly with rag and wipe down border with given alcohol swab



SAFEPLATE

4 Peel off red releaser gently from plate



SAFEPLATE

5 Align Safeplate to your number plate perfectly



SAFEPLATE

6

Stick Safeplate with your number plate and push firmly to its border for better bonding



SAFEPLATE

7 Push down all 4 locking clips to secure Safeplate



SAFEPLATE

Repeat steps for other side

Please do not wash for 48hrs for better result

SAFEPLATE

How to select Safeplate for your car

SAFEPLATE

Check your rear plate of vehicle and look for rivet cap is off/on



SAFEPLATE

Fitting Steps for Two Wheelers

FITTING STEPS

After selecting your SAFEPLATE

SAFEPLATE

Select your Safeplate

1



SAFEPLATE

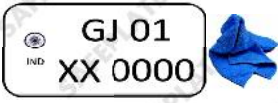
2 Turn around Safeplate



SAFEPLATE

3

Clean your number plate thoroughly with rag and wipe down border with given alcohol swab



SAFEPLATE

4

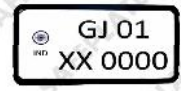
Peel off red releaser gently from plate



SAFEPLATE

5

Align Safeplate to your number plate perfectly



SAFEPLATE

6

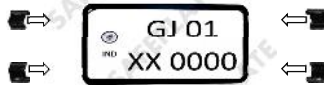
Stick Safeplate with your number plate and push firmly to its border for better bonding



SAFEPLATE

7

Push down all 4 locking clips to secure Safeplate



SAFEPLATE

Repeat steps for other side



Please do not wash for 48hrs for better result

SAFEPLATE



THANKS!

We greatly appreciate your feedback and support.

SAFEPLATE